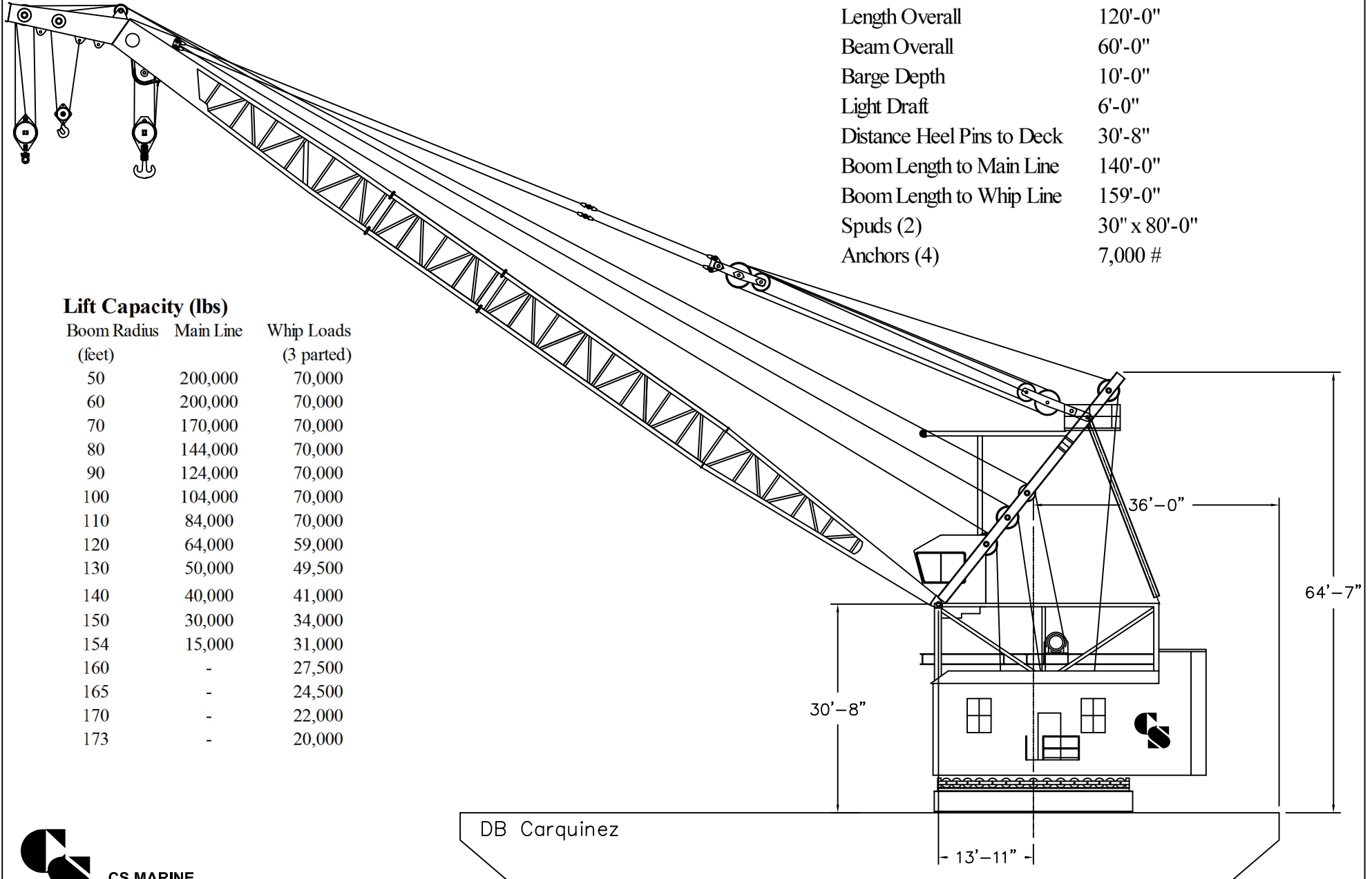


# DB CARQUINEZ

USCG Reg. No.: 1293012

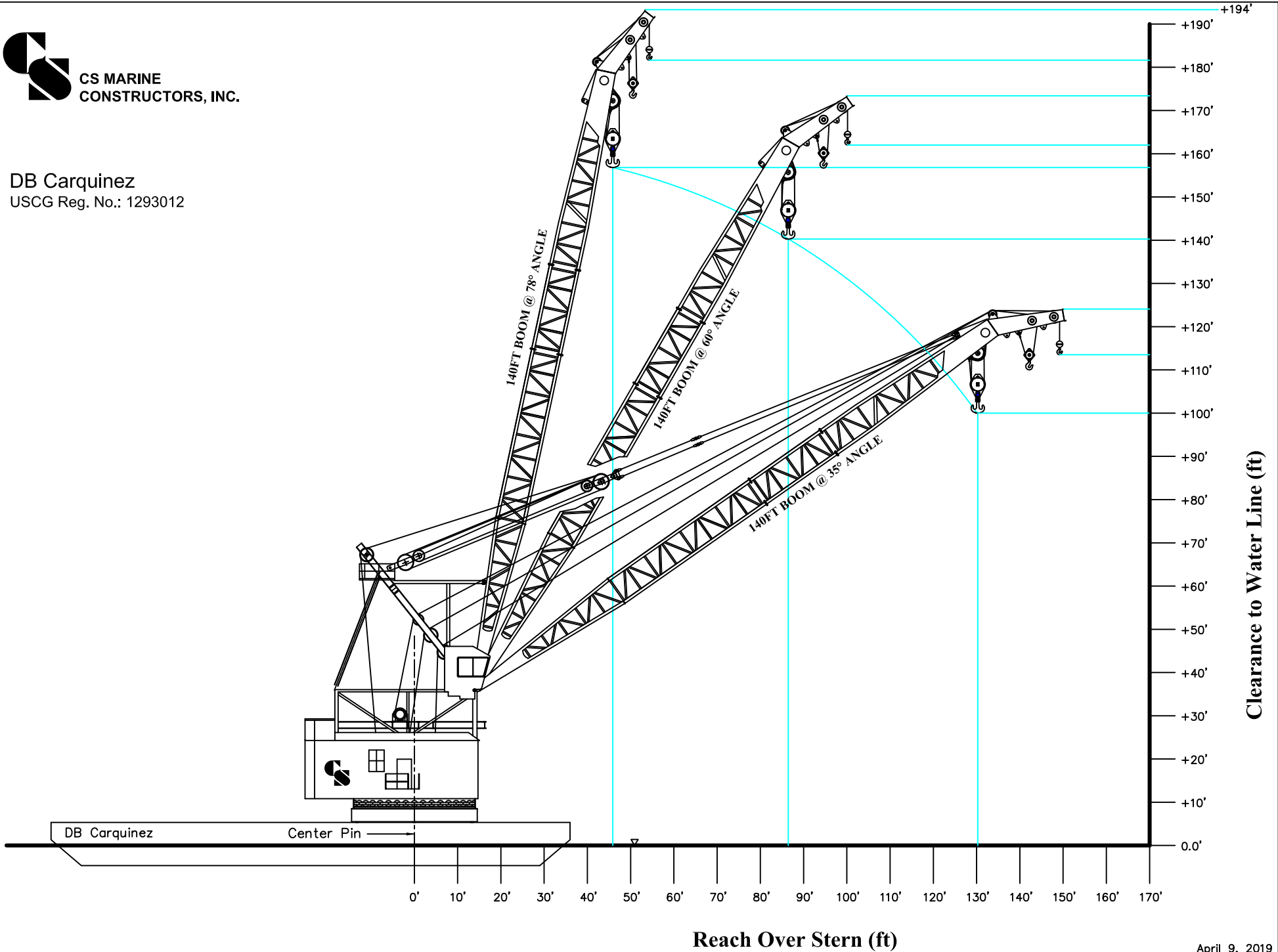


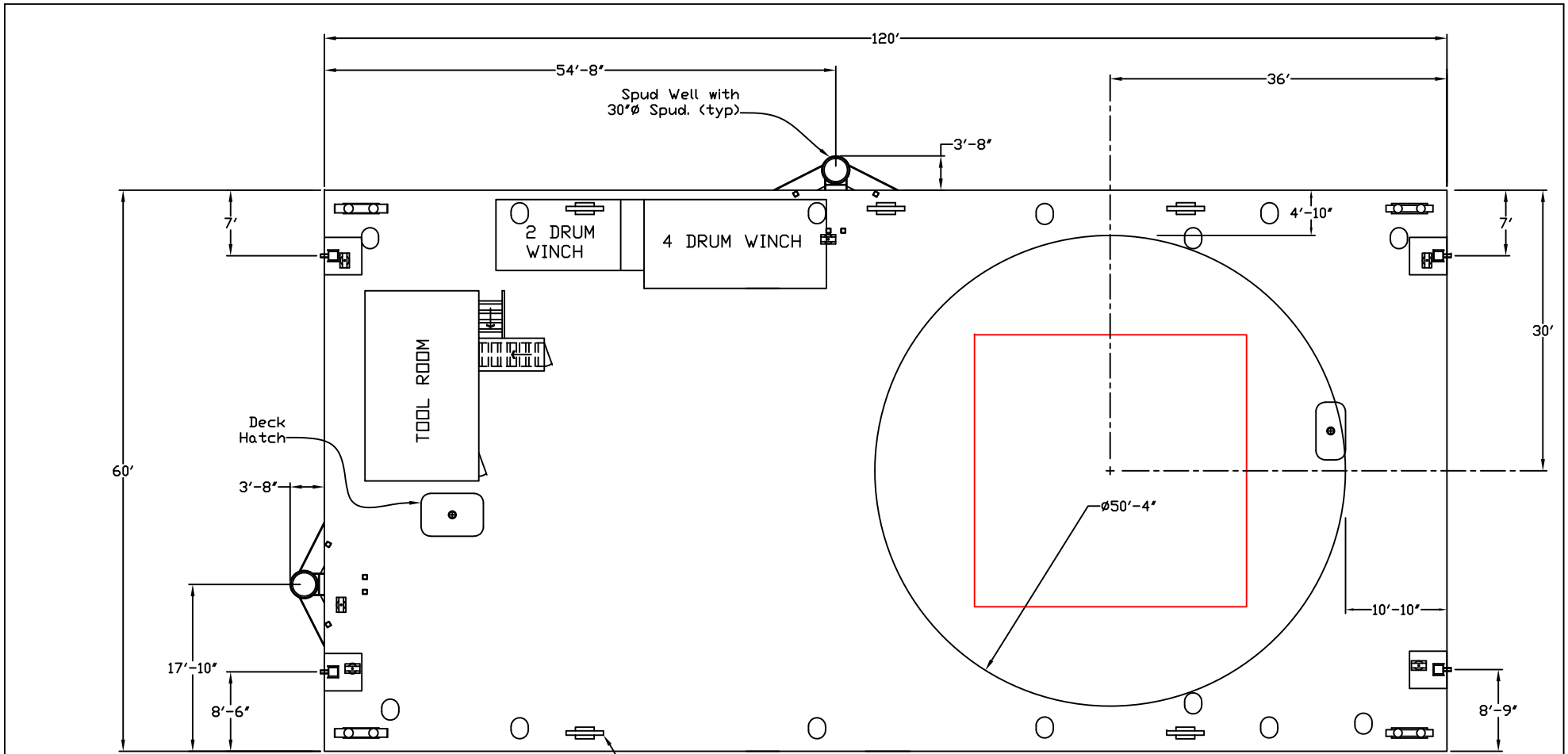
Length Overall	120'-0"
Beam Overall	60'-0"
Barge Depth	10'-0"
Light Draft	6'-0"
Distance Heel Pins to Deck	30'-8"
Boom Length to Main Line	140'-0"
Boom Length to Whip Line	159'-0"
Spuds (2)	30" x 80'-0"
Anchors (4)	7,000 #

## Lift Capacity (lbs)

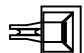

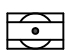
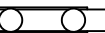
Boom Radius (feet)	Main Line	Whip Loads (3 parted)
50	200,000	70,000
60	200,000	70,000
70	170,000	70,000
80	144,000	70,000
90	124,000	70,000
100	104,000	70,000
110	84,000	70,000
120	64,000	59,000
130	50,000	49,500
140	40,000	41,000
150	30,000	34,000
154	15,000	31,000
160	-	27,500
165	-	24,500
170	-	22,000
173	-	20,000

DB Carquinez  
USCG Reg. No.: 1293012





**LEGEND**

-  - Fairlead
-  - Hatch
-  - Guide Sheave
-  - BITT

CSM DB Carquinez - Deck Plan



**MARINE  
CONSTRUCTORS, INC.**

TITLE		DATE	
CSM DB Carquinez - Deck Plan		2/11/04	
DRAWN BY	M WEISZ	SHEET	DWG 001

ZONE	REV	DESCRIPTION	DATE	APPROVED