

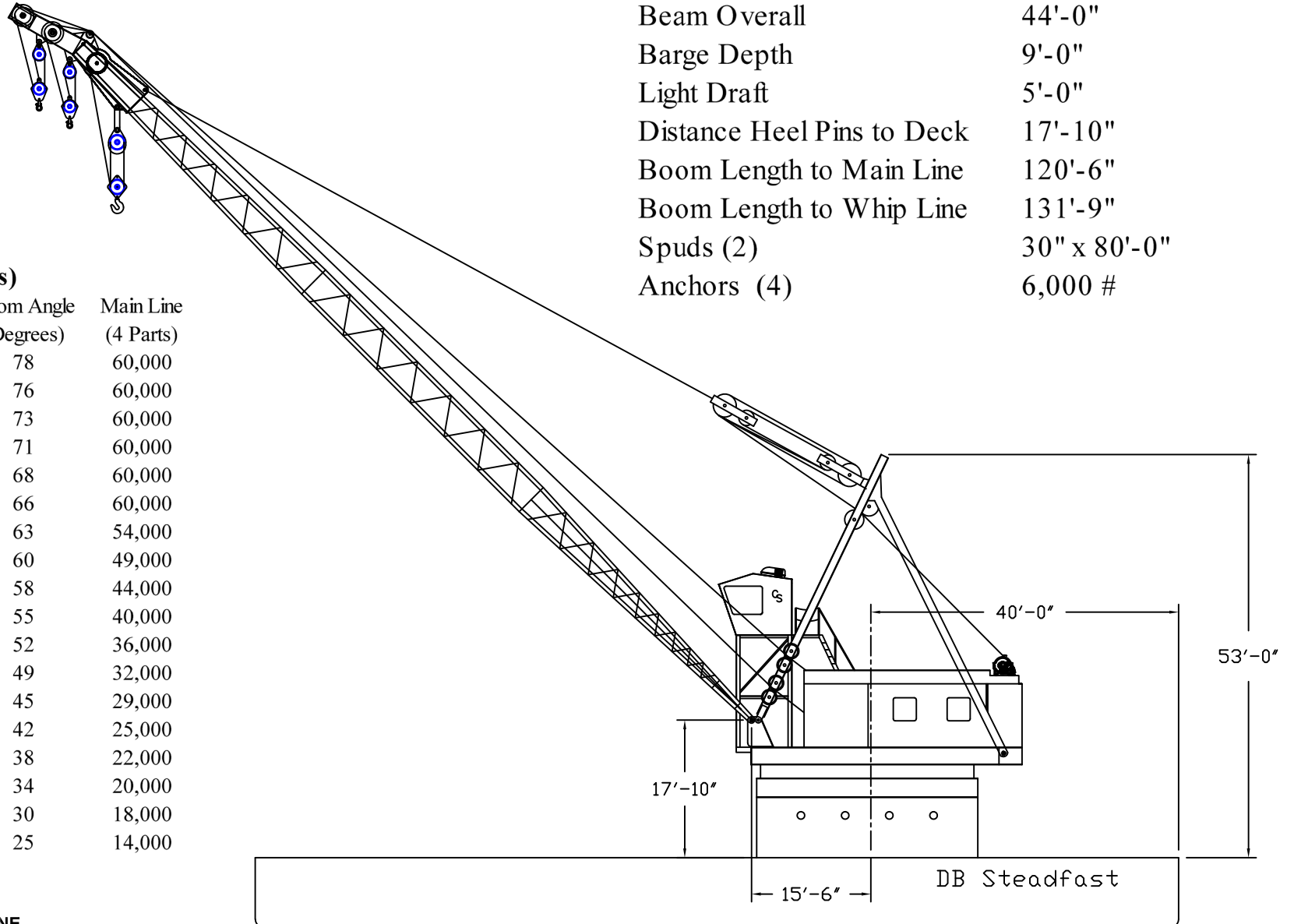
# DB Steadfast

USCG Reg. No.: 252295

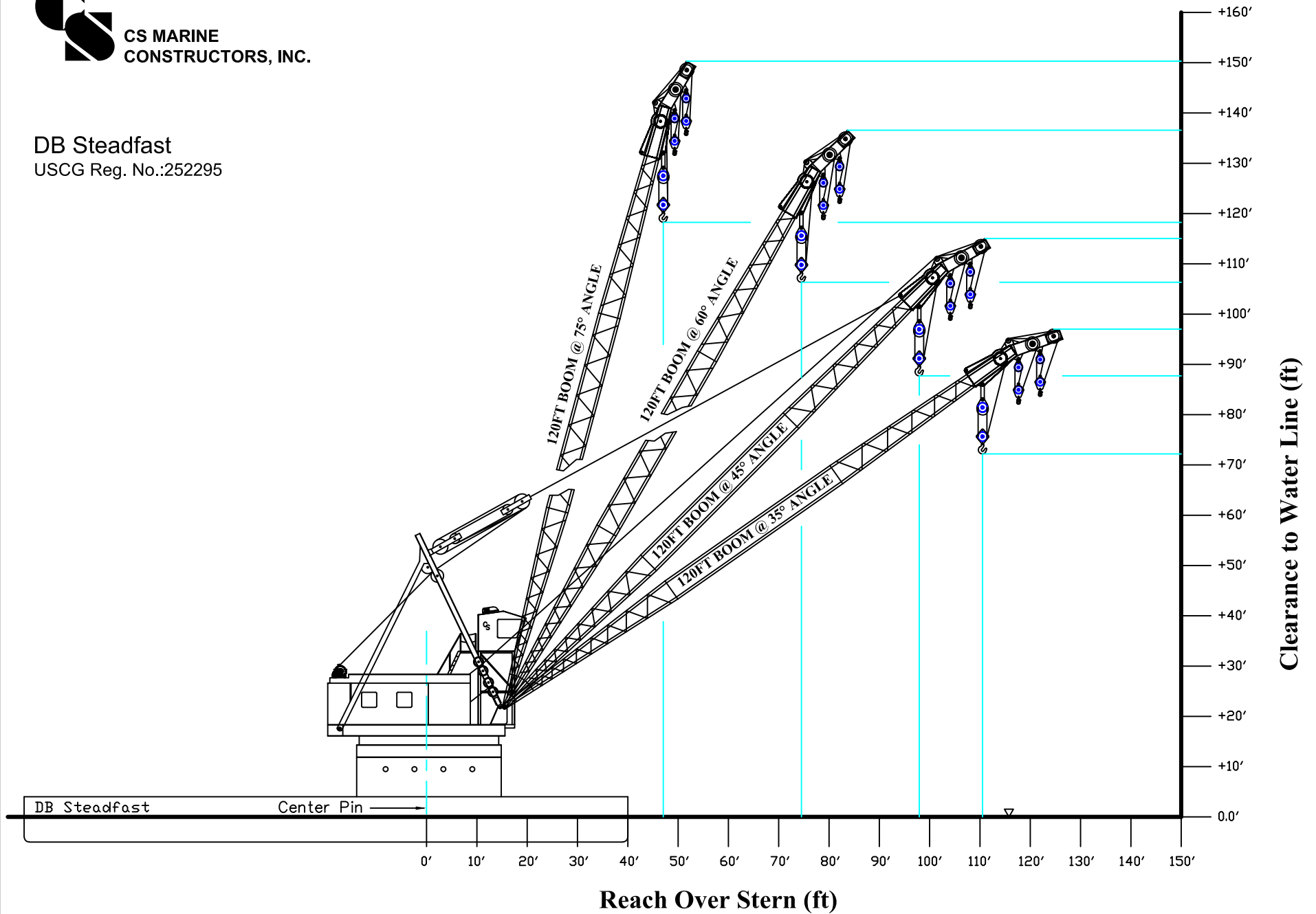
Length Overall	120'-0"
Beam Overall	44'-0"
Barge Depth	9'-0"
Light Draft	5'-0"
Distance Heel Pins to Deck	17'-10"
Boom Length to Main Line	120'-6"
Boom Length to Whip Line	131'-9"
Spuds (2)	30" x 80'-0"
Anchors (4)	6,000 #

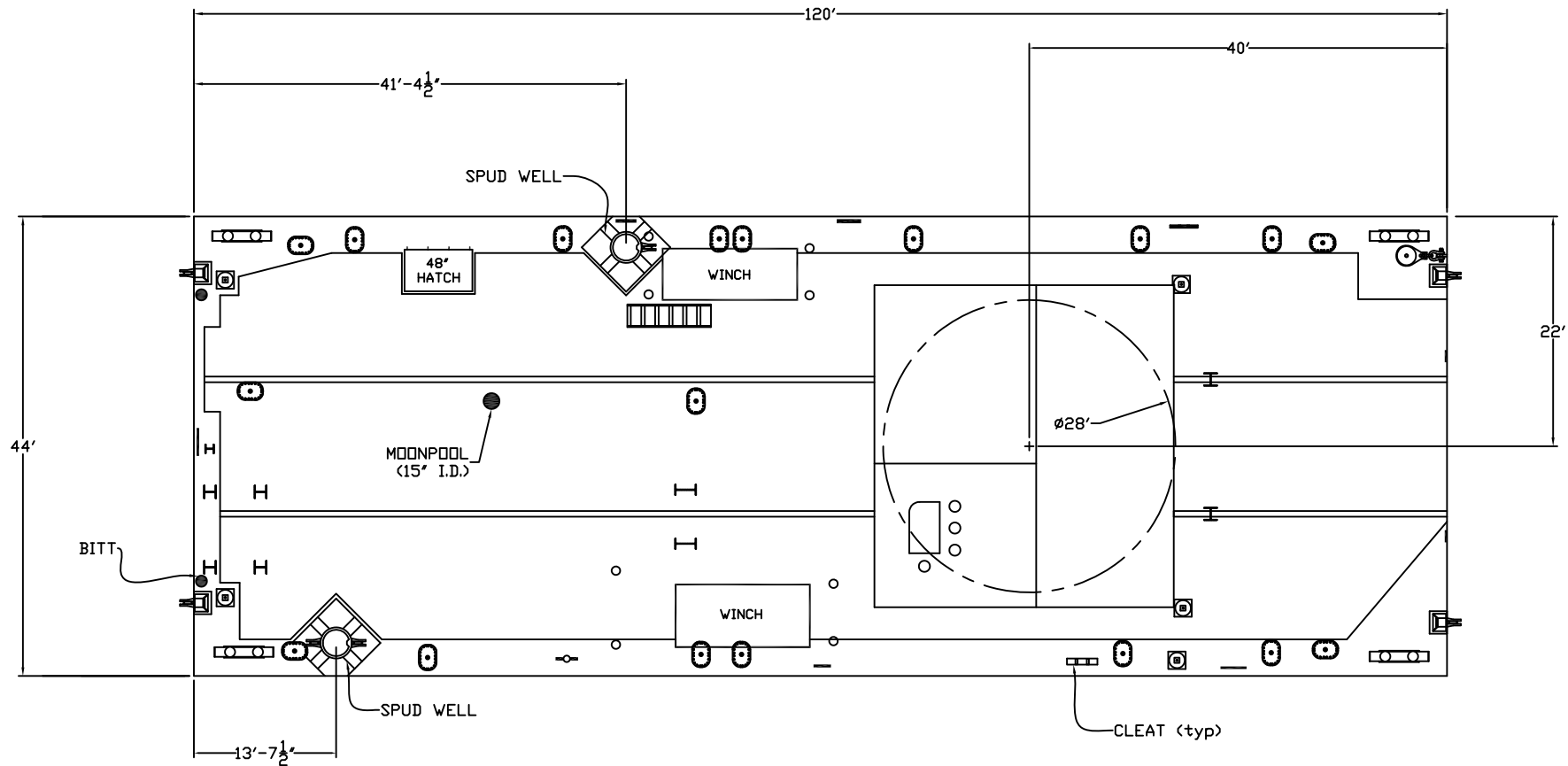
## Lift Capacity (lbs)

Boom Radius (feet)	Boom Angle (Degrees)	Main Line (4 Parts)
40	78	60,000
45	76	60,000
50	73	60,000
55	71	60,000
60	68	60,000
65	66	60,000
70	63	54,000
75	60	49,000
80	58	44,000
85	55	40,000
90	52	36,000
95	49	32,000
100	45	29,000
105	42	25,000
110	38	22,000
115	34	20,000
120	30	18,000
125	25	14,000

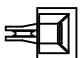





**DB Steadfast**  
USCG Reg. No.:252295





**LEGEND**

-  - Fairlead
-  - Hatch
-  - Guide Sheave
-  - BITT

DB STEADFAST - Deck Plan

REVISIONS

ZONE	REV	DESCRIPTION	DATE	APPROVED

 <b>CS MARINE CONSTRUCTORS, INC.</b>		TITLE <b>DB STEADFAST - Deck Plan</b>		DATE 10/01/01
		SCALE	DRAWN BY M WEISZ	SHEET DWG 001